



**India Meteorological Department
(Ministry of Earth Sciences)**

NATIONAL BULLETIN NO. 09 (AS/02/2024)

TIME OF ISSUE: 1250 HOURS IST

DATED: 15.10.2024

FROM: INDIA METEOROLOGICAL DEPARTMENT (FAX NO. 24643965/24699216/24623220)

**TO: CONTROL ROOM, NDM, MINISTRY OF HOME AFFAIRS (FAX.NO. 23093750)
CONTROL ROOM NDMA (FAX.NO. 26701729)
CABINET SECRETARIAT (FAX.NO.23012284, 23018638)
PS TO HON'BLE MINISTER FOR S & T AND EARTH SCIENCES (FAX NO.23316745)
SECRETARY, MOES (FAX NO. 24629777)
H.Q. (INTEGRATED DEFENCE STAFF AND CDS) (FAX NO. 23005137/23005147)
DIRECTOR GENERAL, DOORDARSHAN (23385843)
DIRECTOR GENERAL, AIR (23421105, 23421219)
PIB MOES (FAX NO. 23389042)
UNI (FAX NO. 23355841)
D.G. NATIONAL DISASTER RESPONSE FORCE (NDRF) (FAX NO. 26105912, 2436 3260)
DIRECTOR, PUNCTUALITY, INDIAN RAILWAYS (FAX NO. 23388503)
CHIEF SECRETARY, MAHARASHTRA (FAX NO. 022- 22028594)
CHIEF SECRETARY, GUJARAT (FAX NO. 079-23250305)
CHIEF SECRETARY, DAMAN & DIU (FAX NO. 0260-2230775)
CHIEF SECRETARY, DADRA & NAGAR HAVELI (FAX NO. 0260-2645466)
CHIEF SECRETARY, GOA (FAX NO. 0832-2415201)
CHIEF SECRETARY, KARNATAKA (FAX NO. 080-22258913)
CHIEF SECRETARY, KERALA (FAX NO. 0471-2327176)
CHIEF SECRETARY, LAKSHADWEEP (FAX NO. 04896-268124)
CHIEF SECRETARY, TAMIL NADU (FAX NO. 044-25672304)
CHIEF SECRETARY, ANDHRA PRADESH (FAX NO. 0863-2441029)
CHIEF SECRETARY, PUDUCHERRY (FAX NO. 0413-2334145)**

Sub: (A) Well Marked Low Pressure Area over central parts of south Bay of Bengal and (B) Depression over westcentral Arabian Sea off Oman coast

(A) Well Marked Low Pressure Area over central part of south Bay of Bengal

The well marked low pressure area over the central part of south Bay of Bengal persisted over the same region at 0830 hours IST of today, the 15th October 2024.

It is likely to move west-northwestwards and intensify into a depression over southwest Bay of Bengal during next 24 hours. It is likely to continue to move west-northwestwards towards north Tamil Nadu, Puducherry and adjoining south Andhra Pradesh coasts during subsequent 24 hours.

Warnings:

(i) Rainfall Warning:

Tamil Nadu & Puducherry: Light to moderate rainfall over most places with heavy to very heavy rainfall at isolated places is very likely over Tamil Nadu & Puducherry on 15th October.

Light to moderate rainfall over most places with heavy to very heavy rainfall at a few places over with extremely heavy rainfall at isolated places over north Tamil Nadu & Puducherry is very likely on 16th October.

Light to moderate rainfall over most places with heavy to very heavy rainfall at isolated places is very likely over north interior Tamil Nadu on 17th October.

Light to moderate rainfall over most places with heavy at isolated places over south Tamil Nadu is very likely during 15th to 17th October.

South Andhra Pradesh & Rayalaseema Light to moderate rainfall over most places with heavy to very heavy rainfall at isolated places is very likely on 15th ; heavy to very heavy rainfall at a few places with extremely heavy rainfall at isolated places is likely on 16th October and heavy rainfall at isolated places is likely on 17th October.

Kerala & south Interior Karnataka: Light to moderate rainfall over most places with heavy to very heavy rainfall at isolated places is likely over Kerala and south Interior Karnataka during 15th to 17th October.

(ii) Wind Warning:

Squally weather with wind speed reaching 35-45 kmph gusting 55 kmph is likely to prevail over southeast and adjoining southwest & central Bay of Bengal till evening of today, the 15th October. It is likely to increase thereafter becoming squally wind speed reaching 40-50 kmph gusting to 60 kmph over southwest and adjoining westcentral Bay of Bengal and along & off Tamil Nadu, Puducherry and south Andhra Pradesh coasts till 17th October and decrease gradually thereafter.

(iii) Sea Condition:

Moderate to Rough Sea condition is likely to prevail over southeast and adjoining southwest & central Bay of Bengal till evening of today, the 15th October. It is likely to become Rough to very Rough Sea condition thereafter over southwest & adjoining westcentral Bay of Bengal and along & off Tamil Nadu, Puducherry and south Andhra Pradesh coasts till 17th October and improve gradually thereafter.

(iv) Fishermen Warning:

Fishermen are advised not to venture into

- Southeast and adjoining central Bay of Bengal on 15th October.
- Southwest and adjoining westcentral Bay of Bengal from 15th to 17th October.
- Fishermen out at sea are advised to return to coasts.

(v) Flash Flood Guidance:

24 hours Outlook for the Flash Flood Risk (FFR) till 0530 IST of 16-10-2024 :

Low to Moderate flash flood risk likely over few watersheds & neighbourhoods of following Met Sub-divisions during next 24 hours.

Coastal Andhra Pradesh – Nellore and Prakasham district

Rayalaseema – Kadapa and Chittor districts

Tamil Nadu, Puducherry and Karaikal – Thiruvallur district.

Surface runoff/ Inundation may occur at some fully saturated soils & low-lying areas over area of concern as shown in map due to expected rainfall occurrence in next 24 hours.

❖ Impact Expected [Tamil Nadu (including Chennai) and Andhra Pradesh due to heavy rainfall]

- Localized Flooding of roads, water logging in low lying areas and closure of underpasses mainly in urban areas of the above region.
- Occasional reduction in visibility due to heavy rainfall.
- Disruption of traffic in major cities and roadways due to water logging in roads and poor visibility due to heavy rain leading to increased travel time and incidents
- Likely disruption of marine and inland water transportation like small boats and trawlers.
- Minor damage to kutcha roads.
- Possibilities of damage to vulnerable structure.
- Localized Landslides/Mudslides/landslips/mud slips/land sinks/mud sinks.
- Damage to horticulture and standing crops in some areas due to inundation and wind.
- It may lead to riverine flooding in some river catchments (for riverine flooding please visit Webpage of Central Water Commission)

❖ **Action Suggested [Tamil Nadu and Andhra Pradesh due to heavy rainfall]**

- Fishermen are advised not to venture into
 - Southeast and adjoining central Bay of Bengal on 15th October.
 - Southwest and adjoining westcentral Bay of Bengal from 15th to 17th October.
 - Fishermen out at sea are advised to return to coasts.
- Judicious regulation of surface transports including railways and roadways and onshore/offshore activities.
- Check for traffic congestion on your route before leaving for your destination.
- Follow any traffic advisories that are issued in this regard.
- Avoid going to areas that face the water logging problems often.
- Avoid staying in vulnerable structure.

Agromet advisories for Heavy Rainfall

- Provide mechanical support to horticultural crops & staking to vegetables.
- Keep the harvested produce at safer place.

(B) Depression over westcentral Arabian Sea off Oman coast

The Depression over westcentral Arabian Sea off Oman coast moved northwestwards with a speed of 18 kmph during past 6 hours, and lay centred at 0830 hours IST of today, the 15th October, 2024 over the same region near latitude 16.8°N and longitude 60.5°E, about 460 km south-southeast of Masirah (Oman), 680 km east of Salalah (Oman) and 900 km east of Al Ghaidah (Yemen).

It is likely to move nearly north-westwards towards Oman coast and weaken gradually into a well-marked low pressure area during next 06 hours.

Warnings:

(i) Wind warning:

- Squally wind speed reaching 35-45 kmph gusting to 55 kmph is likely to prevail over westcentral Arabian Sea till evening of 15th October and decrease gradually thereafter.

(ii) Sea condition:

- Rough sea condition is likely to prevail only over westcentral Arabian Sea till evening of 15th October and improve gradually thereafter.

(iii) Fishermen warning:

Fishermen are advised not venture into

- Westcentral Arabian Sea till morning of 16th October.

❖ **Impact Expected over Sea area**

- Reduction of visibility over sea area due to sea spray induced by strong wind and heavy rainfall.
- Impact expected for boats, motor boats, smaller ships and trawler used for fishing and other purposes.

❖ **Action Suggested**

Fishermen are advised not venture into

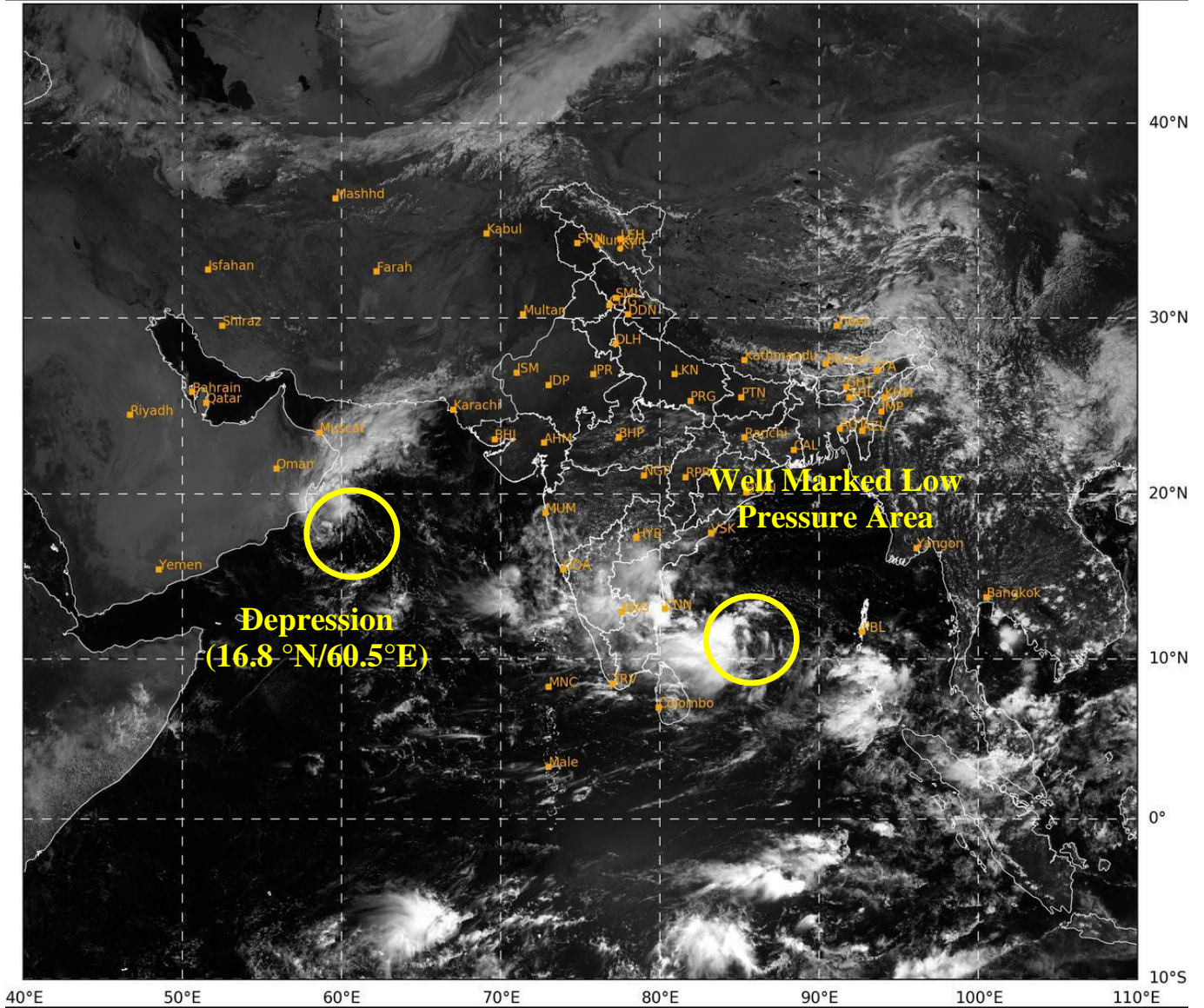
- Westcentral Arabian Sea till morning of 16th October.

Next bulletin will be issued at 1430 hours IST of today, the 15th October, 2024.

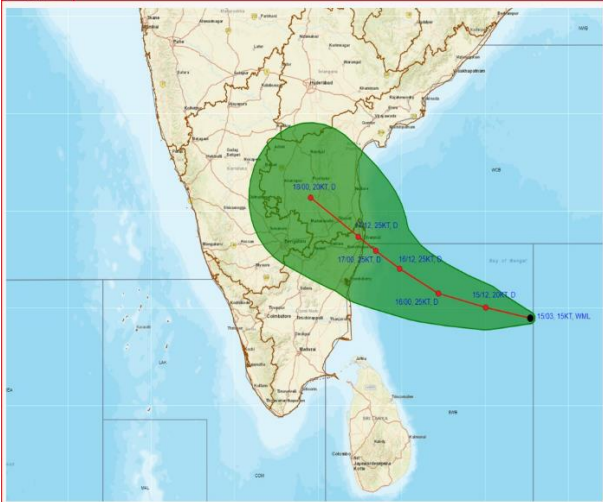
(Dr. D. R. Pattanaik)

Scientist-F, RSMC & IMD, New Delhi

Copy to: ACWC Kolkata/ACWC Mumbai/ACWC Chennai/CWC Ahmedabad/CWC Bhubaneswar/CWC Vishakhapatnam CWC, Thiruvananthapuram/ MC, Goa



WELL MARKED LOW PRESSURE AREA OVER CENTRAL PARTS OF SOUTH BAY OF BENGAL BASED ON 0300 UTC (0830 Hrs. IST) OF 15th OCTOBER, 2024

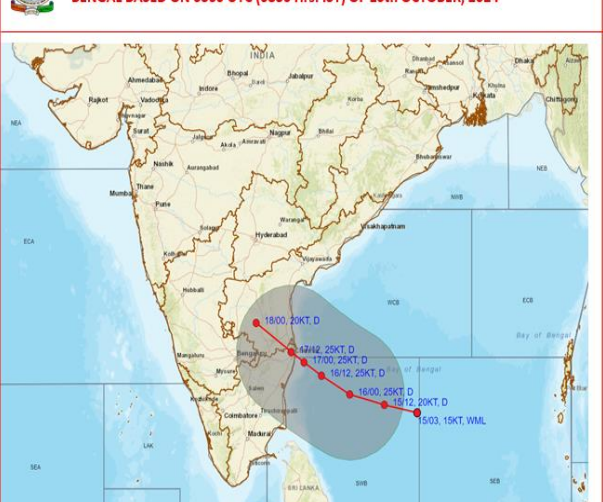


DATE/TIME IN UTC
 IST-UTC + 0530
 L: LOW PRESSURE AREA
 WML: WELL MARKED LOW PRESSURE AREA
 D: DEPRESSION (17-27 KT)
 DD: DEEP DEPRESSION (28-33 KT)
 CS: CYCLONIC STORM (34-47 KT)
 SCS: SEVERE CYCLONIC STORM (48-63KT)
 VSCS: VERY SEVERE CYCLONIC STORM (64-89 KT)
 ESCS: EXTREMELY SEVERE CYCLONIC STORM (90-119 KT)
 SuCS: SUPER CYCLONIC STORM (≥ 120 KT)

● LESS THAN 34 KT
 ○ 34-47 KT
 ○ ≥ 48 KT

— OBSERVED TRACK
 — FORECAST TRACK
 ■ CONE OF UNCERTAINTY

OBSERVED AND FORECAST TRACK ALONGWITH QUADRANT WIND DISTRIBUTION OF WELL MARKED LOW PRESSURE AREA OVER CENTRAL PARTS OF SOUTH BAY OF BENGAL BASED ON 0300 UTC (0830 Hrs. IST) OF 15th OCTOBER, 2024

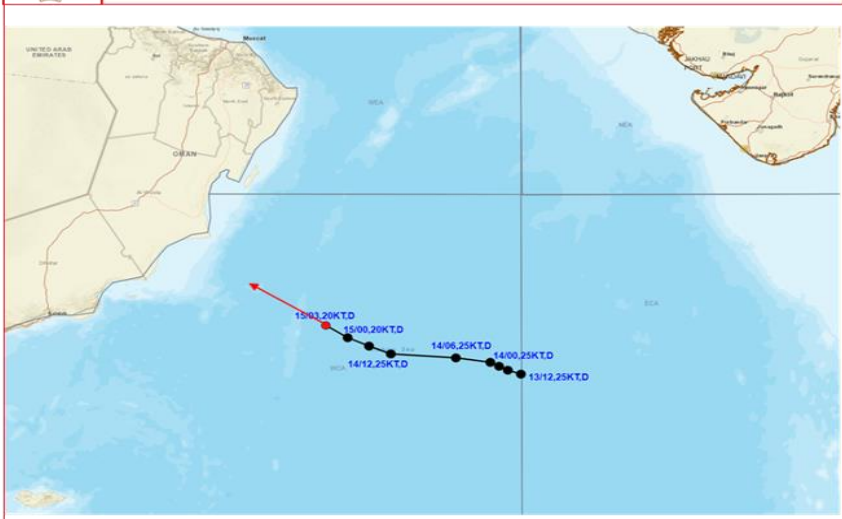


DATE/TIME IN UTC
 IST-UTC + 0530
 L: LOW PRESSURE AREA
 WML: WELL MARKED LOW PRESSURE AREA
 D: DEPRESSION (17-27 KT)
 DD: DEEP DEPRESSION (28-33 KT)
 CS: CYCLONIC STORM (34-47 KT)
 SCS: SEVERE CYCLONIC STORM (48-63KT)

● LESS THAN 34 KT
 ○ 34-47 KT
 ○ ≥ 48 KT

— OBSERVED TRACK
 — FORECAST TRACK
 ■ CONE OF UNCERTAINTY
 ■ AREA OF MAXIMUM SUSTAINED WIND SPEED:
 ■ 20-30 KT (35-55 KMPH)

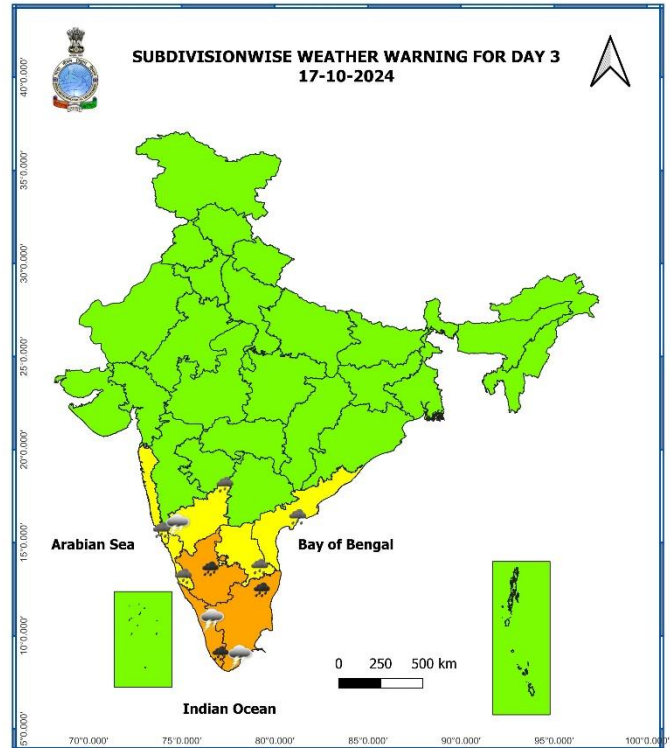
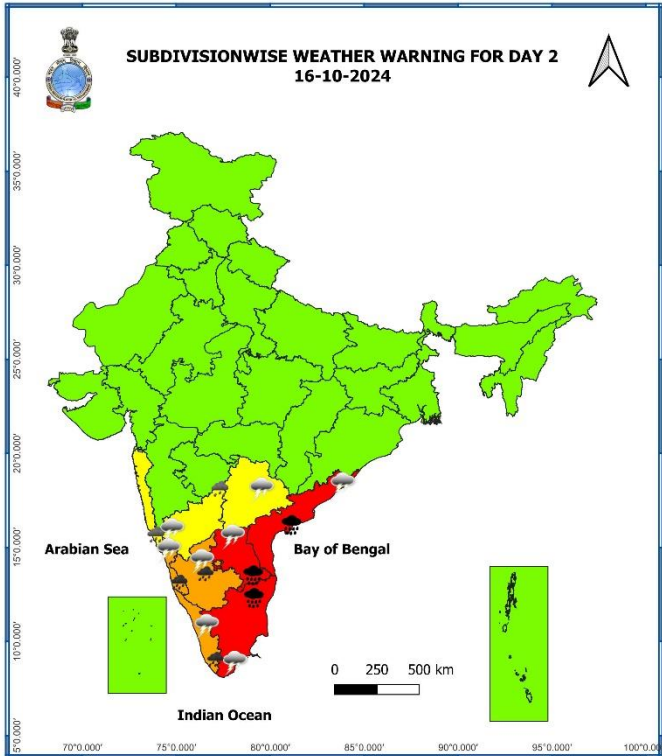
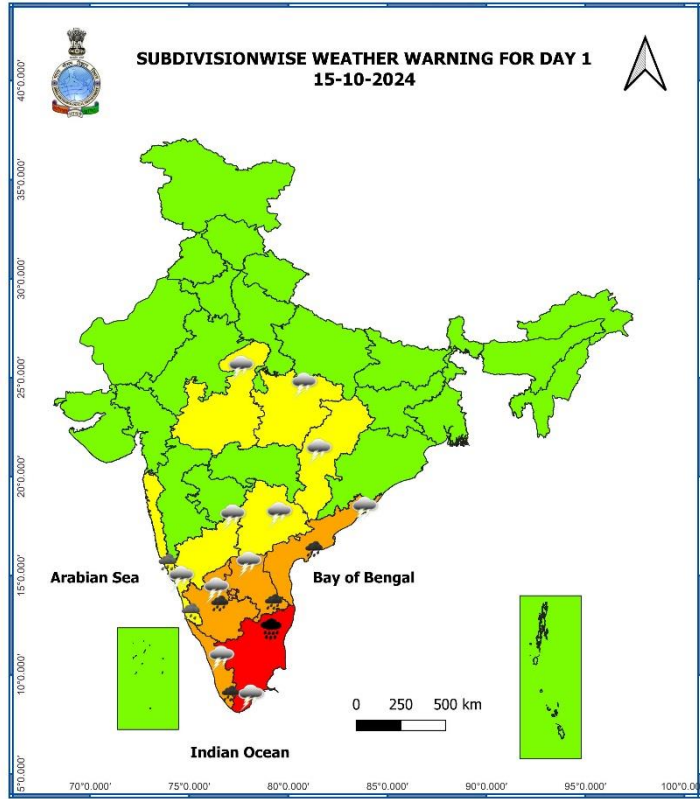
OBSERVED AND FORECAST TRACK OF DEPRESSION OVER WESTCENTRAL ARABIAN SEA BASED ON 0300 UTC (0830 Hrs. IST) OF 15th OCTOBER, 2024

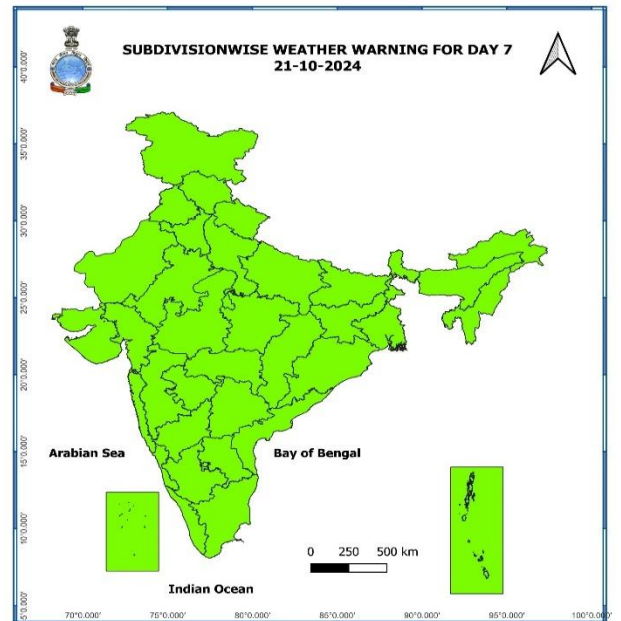
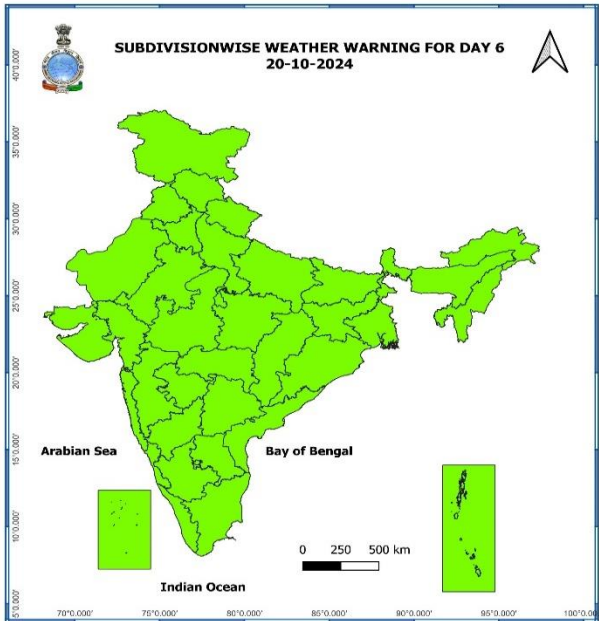
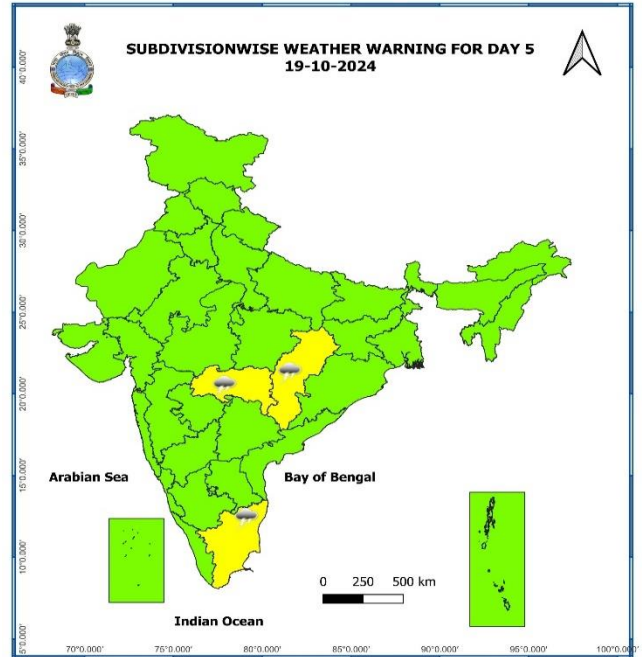
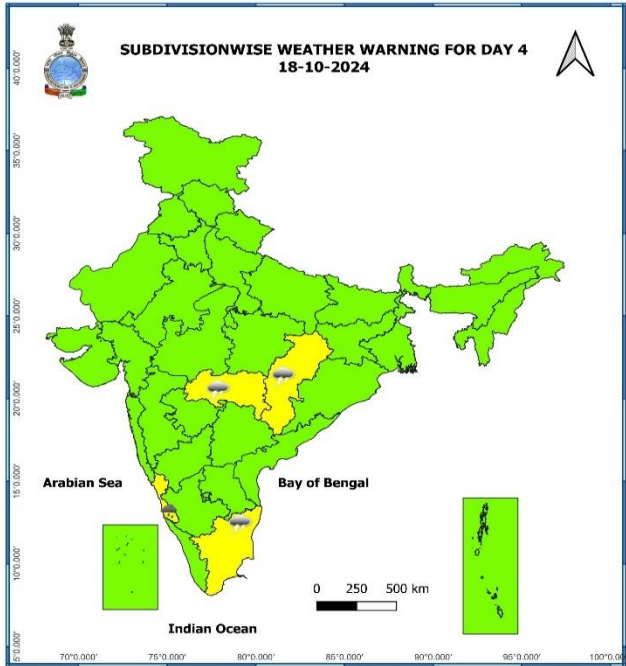


DATE/TIME IN UTC
 IST-UTC + 0530
 L: LOW PRESSURE AREA
 WML: WELL MARKED LOW PRESSURE AREA
 D: DEPRESSION (17-27 KT)
 DD: DEEP DEPRESSION (28-33 KT)
 CS: CYCLONIC STORM (34-47 KT)
 SCS: SEVERE CYCLONIC STORM (48-63KT)
 VSCS: VERY SEVERE CYCLONIC STORM (64-89 KT)
 ESCS: EXTREMELY SEVERE CYCLONIC STORM (90-119 KT)
 SuCS: SUPER CYCLONIC STORM (≥ 120 KT)

● LESS THAN 34 KT
 ○ 34-47 KT
 ○ ≥ 48 KT

— OBSERVED TRACK
 — FORECAST TRACK
 ■ CONE OF UNCERTAINTY





- Action may be taken based on **ORANGE AND RED** COLOUR warnings.
- Vulnerable regions likely urban and hilly areas action may be initiated for heavy rainfall warning.
- As the lead period increases forecast accuracy decreases.

- Fog
- Heavy Rain
- Very Heavy Rain
- Extremely Heavy Rain
- Thunder & Lightning
- Hailstorm
- Dust Raising Winds
- Heavy Snow
- Dust Storm
- Heat Wave
- Warm Night
- Hot Day
- Hot & Humid
- Cold Wave
- Cold Day
- Ground Frost
- Strong Surface Winds

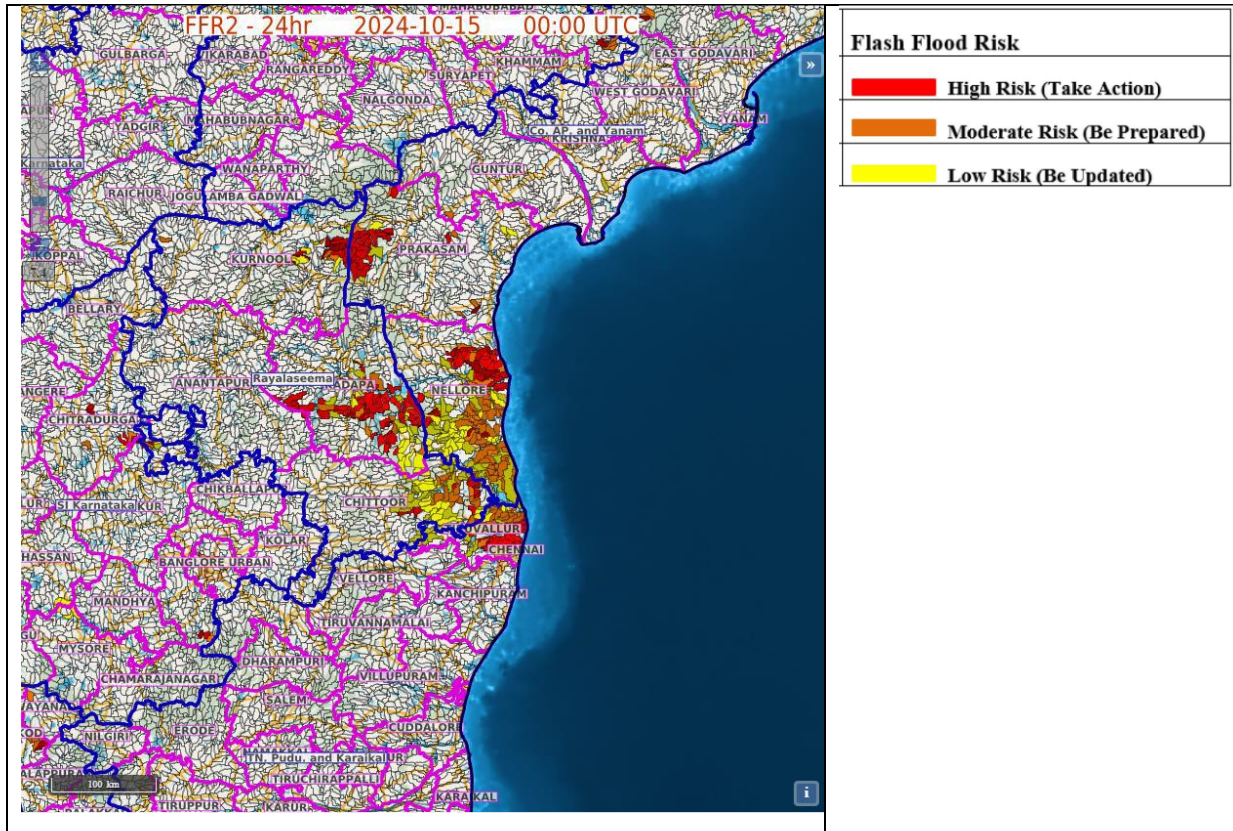
COLOUR CODED WARNING

- No Warning (No Action)
- Watch (Be Aware)
- Alert (Be Prepared To Take Action)
- Warning (Take Action)

Probabilistic Forecast

Terms	Probability of Occurrence (%)
Unlikely	< 25
Likely	25 - 50
Very Likely	50 - 75
Most Likely	> 75

Flash Flood Guidance



24 hours Outlook for the Flash Flood Risk (FFR) till 0530 IST of 16-10-2024 :

Low to Moderate flash flood risk likely over few watersheds & neighbourhoods of following Met Sub-divisions during next 24 hours.

Coastal Andhra Pradesh – Nellore and Prakasham district

Rayalaseema – Kadapa and Chittoor districts

Tamil Nadu, Puducherry and Karaikal – Thiruvallur district.

Surface runoff/ Inundation may occur at some fully saturated soils & low-lying areas over area of concern as shown in map due to expected rainfall occurrence in next 24 hours.

Fishermen Warning Graphics

